

Submersible Pumps

Model

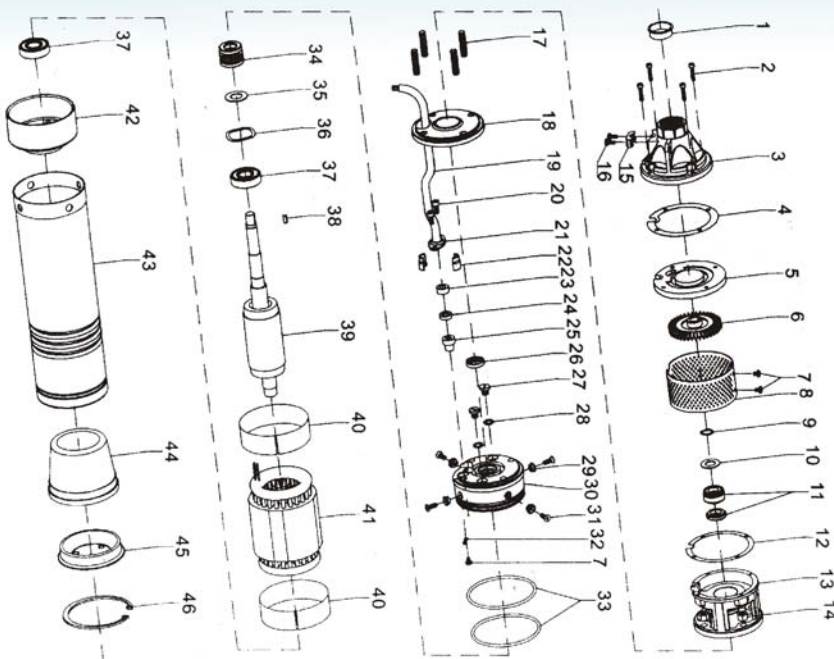
4SK(M) Series



Components	Material
Delivery casing	Brass
Suction lantern	AISI 202 SS
Diffuser	AISI 202 SS
Impeller	Brass
Strainer	AISI 304 SS
Motor external casing	AISI 304 SS
Top chock	Brass or Cast-iron
Bottom support	AISI 304 SS
Mechanical seal	Special seal for deep well (carbon-SiC/TC)
Shaft	AISI 316 SS-C1045
Bearing	NSK
Seal lubricant oil	Oil for food machinery and pharmaceutical use

Model		P2		DN	Q	DELIVERY n=2850r/min											
1~ 220V/240V	3~ 380V/415V	KW	HP			m/h l/min	0	0.3	0.6	0.9	1.2	1.5	1.8	2.1	2.4	2.7	3.0
4SK(M)100	4SK100	0.75	1	1"	H	(m)	64	58	52	46	39	33	26	19	13	9	5
4SK(M)150	4SK150	1.1	1.5	1"		107	98	88	78	68	57	46	34	24	16	9	

PARTS DIAGRAM FOR 4SK SUBMERSIBLE PUMP



1	Outlet cover	24	Cable guard ring
2	Screw	25	Cable holder
3	Delivery casing	26	Framework seal
4	Seal gasket	27	Oil screw
5	Diffuser cover	28	O-ring
6	Impeller	29	Washer
7	Screw	30	Top support
8	Strainer	31	Bolt
9	Circlip	32	Earthing
10	Washer ring	33	O-ring
11	Mechanical seal	34	Mechanical seal
12	Seal gasket	35	Gasket
13	Suction Lantern	36	Undee gasket
14	Bolt	37	Ball bearing
15	Cable line	38	Flat key
16	Screw	39	Rotor
17	Screw	40	Insulation paper
18	Top cover	41	Stator
19	Cable	42	Bottom support
20	Bole	43	Motor external casing
21	Cable Line	44	Oil bag
22	Clasp cover	45	Bottom plate
23	Washer	46	Circle