

KTP 自吸清水泵 SELF-SUCKING PUMPS



CONSTRUCTION

PUMP: Peripheral - Self Sucking

Pump Body: Cast Iron / Cast Iron With Brass Insert
Impeller: Brass
Mechanical Seal: Carbon + Ceramic + Stainless Steel + Rubber
Front Cover: Cast Iron / Cast Iron With Brass Insert

MOTOR: Single Phase Heavy Duty Continuous Work

Motor Housing: Aluminium
Shaft: Carbon Steel / 304 Stainless Steel Welded / 420 Stainless Steel
Insulation: Class B / Class F
Protection: IP44 / IP54
Cooling: External Ventilation

结构特征

泵：旋涡式自吸泵

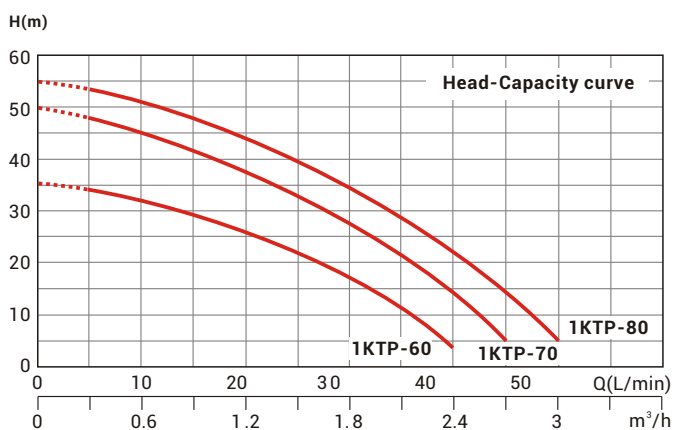
泵体：铸铁/铸铁镶铜
叶轮：铜
机械密封：石墨+陶瓷+不锈钢+橡胶
前端盖：铸铁/铸铁镶铜

电机：单相大马力连续工作制

电机机座：铝压铸
转轴：45#碳钢/304不锈钢焊接轴/整轴420不锈钢
绝缘等级：B级/F级
防护等级：IP44/IP54
冷却方式：风冷



1KTP-60



包装尺寸及毛重 PACKAGE DIMENSIONS & G.W.

型号 Model	长 L	宽 W	高 H	重量 KG	1X20"柜数量 1X20" FCL QTY (pcs)
1KTP-60	275	180	245	7.8	2400
1KTP-70	335	210	260	10.8	1650
1KTP-80	335	210	260	11.2	1650

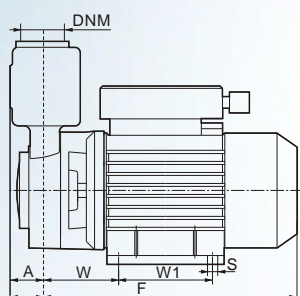
安装尺寸图请查看56页。
For installation dimensions, please refer to page 56.

技术参数 PERFORMANCE SPECIFICATIONS

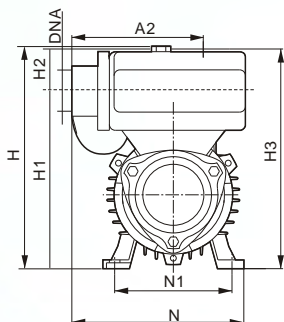
型号 Model	功率 Power		电流 Ampere (A)	最大吸程 Suct. max (m)	进出口管径 Inlet/Outlet DIA	流量 Q=capacity										
						扬程 H (m)										
						m³/h	0	0.3	0.6	0.9	1.2	1.5	1.8	2.1	2.4	2.7
1KTP-60	0.5	0.37	2.5	9	1"x1"	35	31	27.5	23	19	15	11	7.5	4	-	-
1KTP-70	0.75	0.55	3.8		1"x1"	50	45	40	34	29	24	18.5	13.5	9	5	-
1KTP-80	1	0.75	5.2		1"x1"	55	52	48	43	38	33	28	22	17	11	5

*110V,110/220V/60Hz etc. Models are available on request.

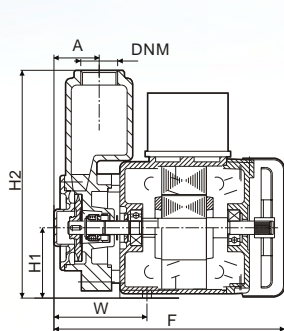
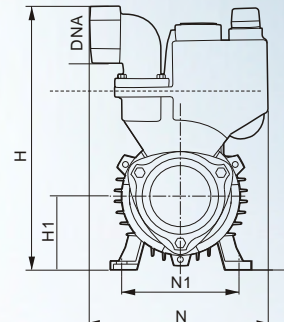
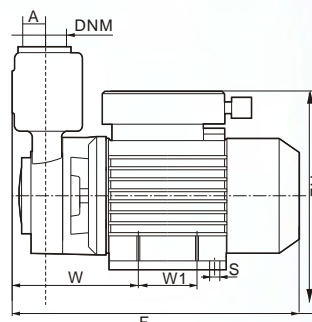
自吸清水泵系列 SELF-SUCKING PUMPS SERIES



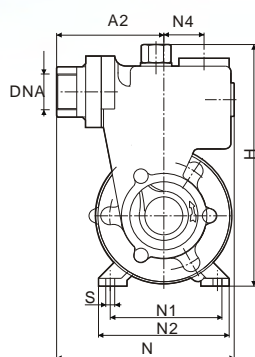
KTP Series



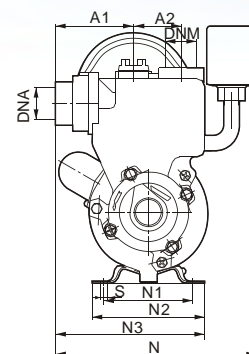
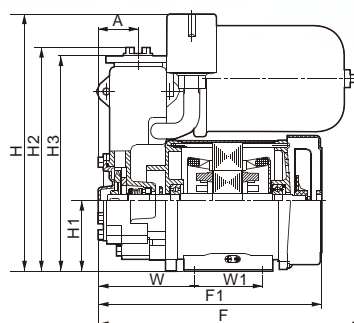
STP Series



GP Series



PS Series



安装尺寸 INSTALLATION DIMENSIONS

型号 Model	尺寸 DIMENSIONS (mm)																
	A	F	F1	H	H1	H2	H3	N	N1	N2	N3	N4	A1	A2	W	W1	S
1KTP-60	29	230	-	192	156	34	190	150	100	-	-	-	-	110	55	80	7
1KTP-70	29	260	-	200	164	34	198	160	112	-	-	-	-	110	62	90	7
1KTP-80	29	260	-	200	164	34	198	160	112	-	-	-	-	110	62	90	7
STP-65A	25	220	-	210	55	135	-	112	90	-	-	-	-	-	70	80	10
GP-125A	40	198	-	220	71	202	-	151	105	121	-	40	83	-	84	-	6
GP-250	40	198	-	220	71	202	-	151	105	121	-	40	83	-	84	-	6
PS130AUTO-A	40.5	265	226	256	71.5	227	217.5	200	90	114	178	-	79	48	97	69	8
PS130AUTO-B	40.5	265	226	256	71.5	227	217.5	200	90	114	178	-	79	48	97	69	8
PS126A	40.5	-	226	-	71.5	227	217.5	200	90	114	178	-	79	48	97	69	8
PS126B	40.5	-	226	-	71.5	227	217.5	200	90	114	178	-	79	48	97	69	8